

Emergency Preparedness Month:
Mobile Home Disasters

Brought to you by
EmergencyPlanGuide.org

September, 2014

Our greatest danger:

Fire!





Unstable flooring, narrow hallways



Metal bends and warps



Pre-1976 more dangerous



Fire chief's advice:
"Go in through the walls."



Napa, last month, 3:20 a.m.





127 water line breaks



Hundreds of reported gas smells, 20 actual leaks, 6 homes burned “probably gas involved”



Sylmar (Sayre) Wildfire – 2008, 480 (of 600) homes burned in 4-star Oakridge Park

Fighting Fire

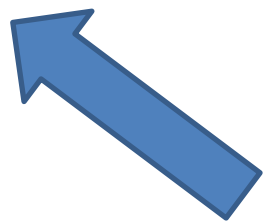
in our neighborhood

- Private water system
- Narrow streets/street parking
- Limited signage, confusing layout
- Storage sheds help fire jump
- Difficult to evacuate



Coming through —
no matter what





Simulator!



Bad parking decision



What evacuation looks like . . .

Earthquake Damage:

What to expect?



Napa - piers



Napa - skirting

















“Red tagged”

Earthquake Damage:

Street damage





No golf cart or wheelchair access here!



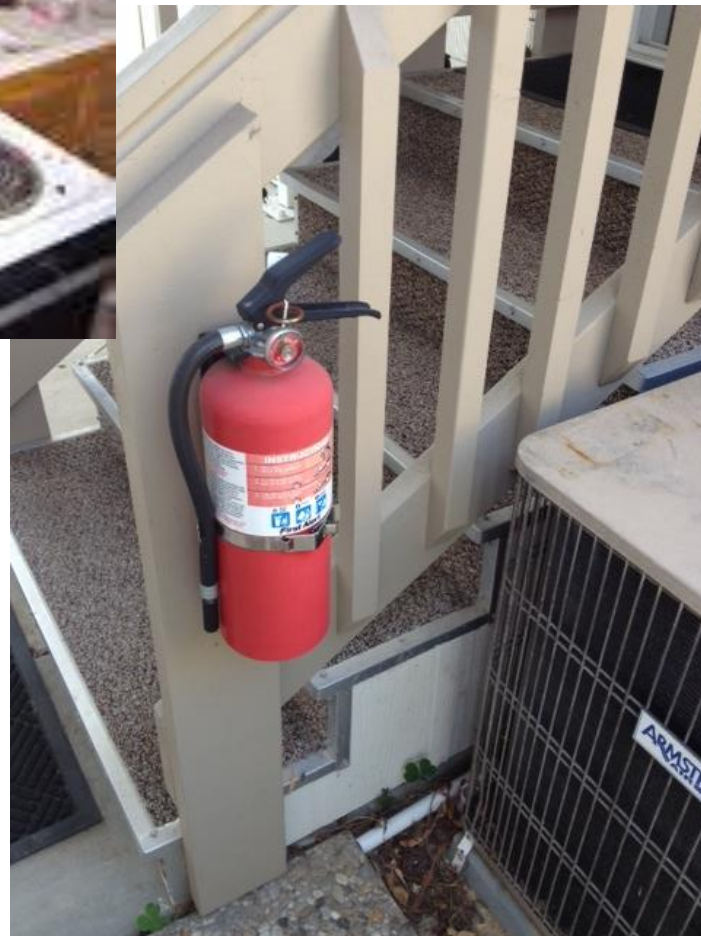


Preventive Measures

- Emergency Team presence
- Continued Education



Fire safety





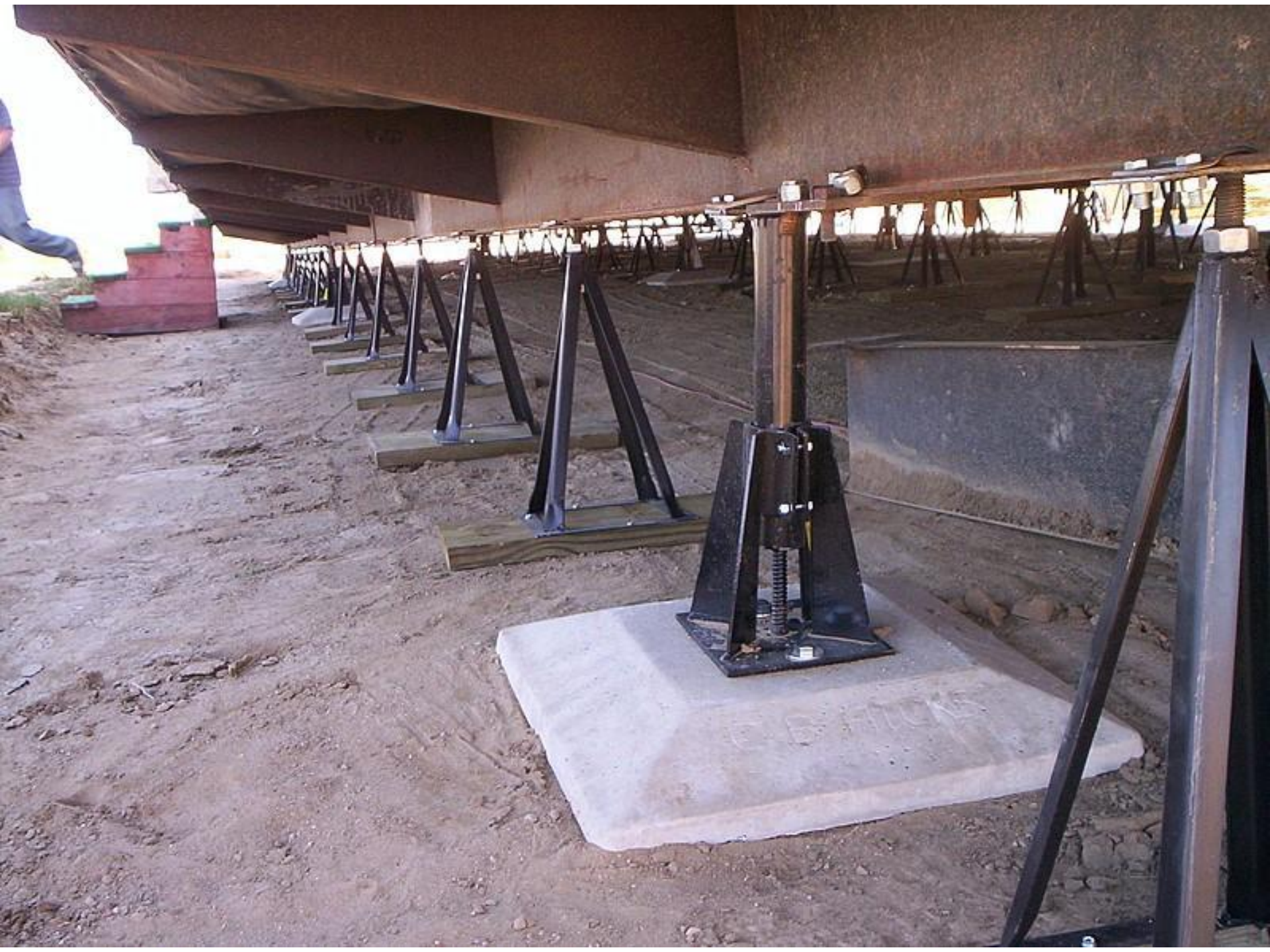
CERT training



Emergency resources
(pool water for flushing toilets)



Earthquake bracing





Safety bracing



Next month:



10-16 at 10:16!

Our goals:

1. Shelter-in-place **supplies**
2. Improve in-home **safety**
3. Be **ready**: Neighbor helping neighbor

Brought to you by
EmergencyPlanGuide.org

September, 2014

Our goal: give you and your family **the best chance of surviving the next disaster.**

On our site: preparedness information and ideas for **individuals**, for the **neighborhood** and for survival at **work.**



What's unique? Every week we put out **easy-to-read Advisories**. Many are based on real-life experiences here where we head up our neighborhood emergency response team.

Sign up to get on the list: <http://EmergencyPlanGuide.org>